



Township of
Westampton

710 Rancocas Road, Westampton, NJ 08060
(609) 267-1891



Roadway Maintenance
PROGRAM
TECHNICAL REPORT – FEBRUARY 2017

The Presidential Center, Lincoln Building, Suite 600, 101 Route 130

CINNAMINSON, NEW JERSEY 08077



(856) 303-1245



(856) 303-1249



www.rve.com

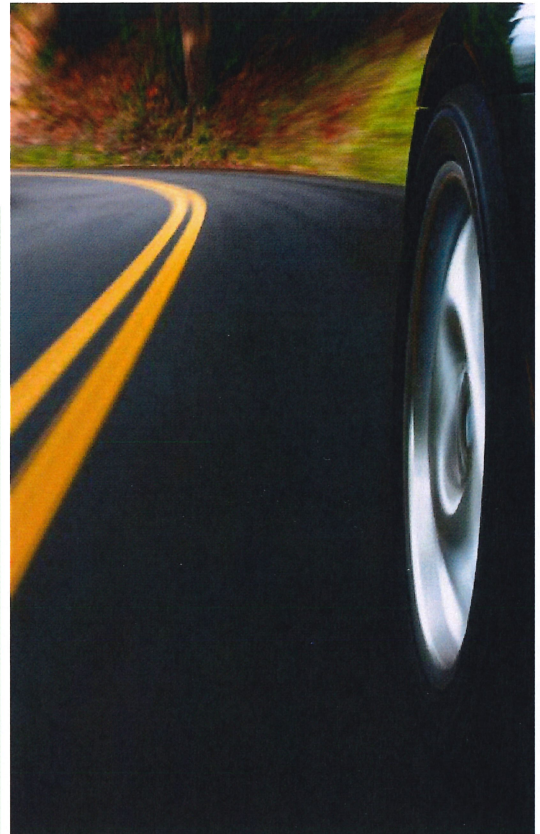


**REMINGTON
VERNICK
& ARANGO
ENGINEERS**

Table of Contents

Our ultimate goal is to serve the municipalities we represent in a cost-efficient and cost-effective manner. We do this by offering engineering and planning expertise across the board. We have expertise in every municipal engineering and planning area – there is rarely a need for an outside consultant. We support small communities and major transportation agencies. Each is offered the same quality of service and the level of service they require.

We proudly serve as consultant to the municipality. Our familiarity with the region, expertise in all facets of municipal engineering, staff of licensed professionals highly experienced in supporting both small and large communities, and 100 years of engineering excellence, will enable our firm to fully support the needs of your community. *Take advantage of our expertise and cost-effective all-around services we offer as your Municipal Consulting firm.*

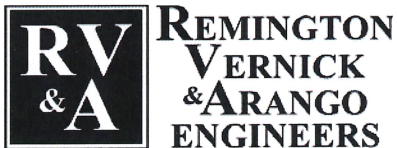


Prepared for:

Township of
Westampton

710 Rancocas Road, Westampton, NJ 08060
(609) 267-1891

Prepared by:



The Presidential Center, Lincoln Building,
Suite 600, 101 Route 130
CINNAMINSON, NEW JERSEY 08077
Phone: (856) 303-1245
Fax: (856) 303-1249
Website: www.RVE.com

K. Wendell Bibbs, PE, CME
Executive Vice President
Email: Wendell.Bibbs@rve.com

SECTION CONTENTS

Section 1: Introduction

Section 2: Objective

Section 3: System Program

APPENDICIES

Appendix A: Summary of Yearly Repairs

Appendix B: Roadway Segments
LISTED ALPHABETICALLY

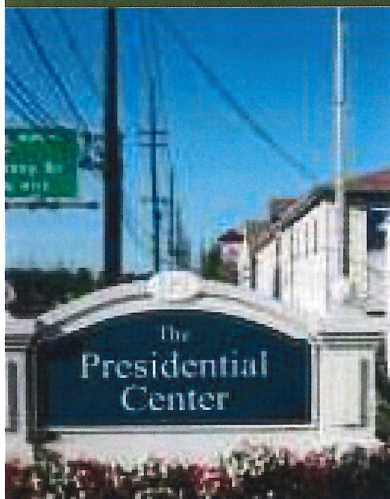
Appendix C: Roadway Segments
BY "CONDITION RATING"

Appendix D: Roadway Segments
LISTED BY YEAR OF RECOMMENDED
MAINTENANCE ACTIVITY

Appendix E: Pie Graph
VISUALLY SHOWING TREATMENTS

Insert – Pavement Assessment Map (PAM)

Note: See separate binders for Individual Roadway Inventory Sheets



1

INTRODUCTION

ROADWAY MAINTENANCE PROGRAM, WESTAMPTON TOWNSHIP, NJ

Roadway pavements are a vital infrastructure component for every municipality. The pavements deteriorate over time at varying rates and the rate of deterioration increases as the condition of the road decreases. The source of this deterioration can be attributed to such factors as poor quality of roadway materials or construction, improper design mix or thicknesses, excessive traffic loads, freeze-thaw cycles or the damaging effects of water infiltration in the pavement and subbase materials.

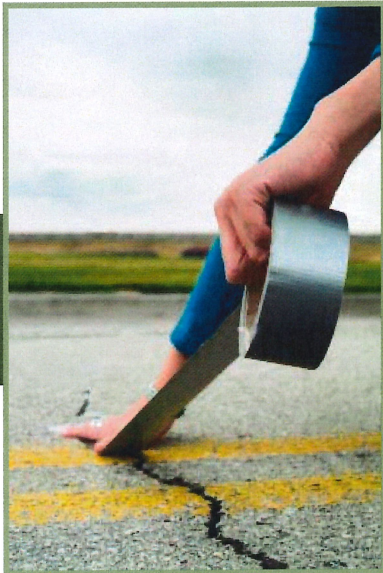
Many municipalities lack a comprehensive planning tool to guide the management of road maintenance. Without a properly organized road maintenance effort, the pavements may deteriorate at an accelerated rate, which can cause the cost of repairs to increase substantially.

Proper and regular road maintenance extends the life of pavements and helps to control maintenance costs by reducing the frequency of reconstruction and emergency maintenance. Without an organized planning tool, some roads may receive excessive attention for repairs and others none at all. Unintentional neglect of pavements can result in higher repair and reconstruction costs since these roads will deteriorate faster, requiring more expensive repairs.

This Roadway Maintenance Program is a tool that can be used to determine when and which roads will receive maintenance. The principal goal of this program is to extend the useful life of the local roadway system. A roadway full of cracks and potholes will cost a considerable amount of funding to restore to an acceptable condition. With the establishment of a regular pavement maintenance program, streets are periodically maintained using resurfacing methods. In theory by utilizing and maintaining this program to manage the roadway pavements, eventually very few roads would exhibit significant deterioration that could warrant costly emergency repairs.

A recent study by the Federal Department of Transportation estimates that deferring \$1 in highway resurfacing for just two years can require spending \$4 in highway reconstruction costs to repair the damage.

The costs of pavement maintenance techniques include full depth reconstruction, milling of the existing asphalt and overlay with new hot mix asphalt surface, resurfacing the existing asphalt with a thin overlay, and seal coating. The cost of resurfacing and seal coating methods are small in comparison to the full depth reconstruction of a roadway. By periodically investing in these lower cost resurfacing/sealing improvements, municipalities may significantly decrease the need for costly reconstruction measures. For this reason, regularly scheduled, cost-effective maintenance improvements can improve the quality of a roadway system, while reducing the total cost to the municipality.



2

OBJECTIVE

ROADWAY MAINTENANCE PROGRAM, WESTAMPTON TOWNSHIP, NJ

The intended goal of this Program is to assess the Township's roadway conditions and provide a baseline tool in development of planned yearly road maintenance schedule. The Program will also serve as a guide to maintain the Township's roads that are in good condition, while improving roads in poor condition. Scheduling improvements over a period of time will allow the Township to effectively plan expenditures for future years and potentially stretch its capital budgets by reducing the need for more costly reconstructions and emergency pavement repairs. The following is an example of pavement maintenance strategy:

After a new or reconstructed road begins to show signs of wear (five to 10 years), instead of letting it deteriorate further, the road may receive a seal coat that helps prevent water penetration. Furthermore, over the next 10 to 20 years, the road may receive additional seal coats and resurfacing at various planned intervals. Eventually, between the roads 35th to 40th year, it will most likely need a full-depth reconstruction or replacement.

If the road did not receive any maintenance or repair, the pavement surface could be a candidate for full-depth reconstruction in 15 to 20 years (versus 35 to 40 years), due to the accelerating rate of deterioration. Additionally, by receiving regular maintenance, the pavement can remain in generally good condition for most of its life cycle. Without regular maintenance and/or repair the road will be in poor condition from approximately the midpoint to the end of its life cycle.

THE BOTTOM LINE is that good roads cost money.

The total cost for maintaining bad roads far exceeds the cost for well-maintained roads.



What is a Pavement Management Plan?

- A comprehensive planning tool that provides for improved quality and performance of the municipal roads
- A plan used to determine what roads will receive appropriate treatment and when
- A systematic approach to curtail wide-spread road deterioration
- A guide to ensure maximized value for road maintenance dollars

3

SYSTEM PROGRAM

ROADWAY MAINTENANCE PROGRAM, WESTAMPTON TOWNSHIP, NJ

The first step in developing the assessment is to establish a consistent system of pavement evaluation for the roads owned and maintained within the Township for this Program. This information was recorded on the Roadway Inventory Sheet during the field evaluation of each roadway. To ensure the ratings were consistent and eliminate subjective discrepancies, only two (2) Remington, Vernick & Arango Engineers' field personnel were utilized in performing the evaluations for the entire Township pavement assessment.

The rating form utilizes a pavement rating system and assigns numerical values to different roadway defects. Higher numerical values are assigned to severe or frequently occurring defects. The numerical values for each defect are added together, multiplied by two, and then subtracted from 100. The resulting number, termed a "condition rating", defines the overall condition of the roadway. For example, a "condition rating" of 100 would be assigned to a perfect roadway with no cracks, potholes or other defects. A roadway in need of total reconstruction, with numerous defects, may have a "condition rating" of 64 or less.

During the roadway inventory in the Township of Westampton, information detailing the physical condition of each roadway was compiled. Information gathered also includes such features as roadway lengths, average widths, types of curbs, curb ramps, traffic markings, traffic stripes, and existence of storm drainage.



AN EFFECTIVE PROGRAM WILL PROVIDE THE FOLLOWING:

- An inventory and rating of existing roadway conditions
- Planned yearly expenditures and maintenance schedule

The roadway assessment produced data detailing the condition of each road owned and maintained in the Township evaluated as part of this program. This data was used in evaluating the following questions for this program:

- What are the physical characteristics (length, width, and other features) of the existing roadway?
- What is the current "condition rating" of the existing pavement?
- What maintenance technique should be utilized/performed if it were to receive a maintenance/treatment in the current year?

The physical characteristics rated for the roadways and a brief description of each are as follows:

ALLIGATOR CRACKING



This condition is characterized by a series of interconnecting cracks that divide the pavement into many-sided, sharp-angled pieces resembling an alligator's hide. Alligator cracking usually occurs in wheel paths or other areas subjected to loading. Alligator cracking can be caused by weakness in the base or sub-grade, which results in the fatigue failure of the asphalt concrete surface under repeated loading.

POTHOLES



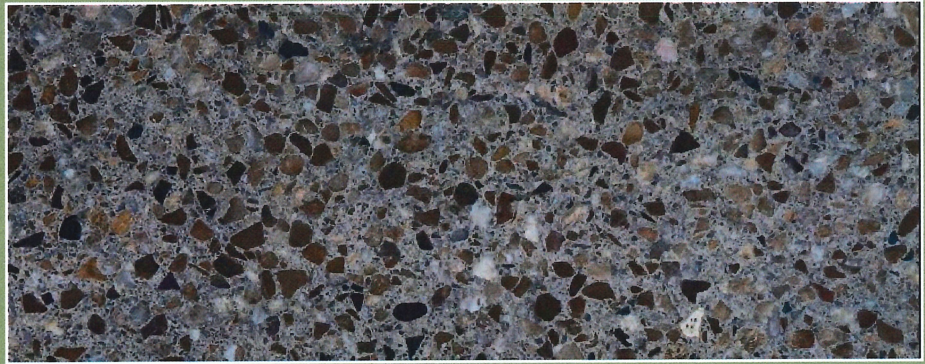
This condition is characterized by holes in the pavement surface at least ½" deep and at least one square foot in surface area. Potholes generally occur when a serious distress, such as alligator cracking, combines with excess water, freeze-thaw cycling, and traffic loads. Potholes are also caused by poor quality hot mix asphalt (low asphalt binder contents or soft aggregate) or insufficient pavement thickness. These result in localized disintegration of the pavement materials and the materials are dislodged by traffic.

DRAINAGE/PONDING PROBLEMS



This condition is typically characterized by inadequate roadway cross slopes holding water on a roadway. This can also be contributed to improper shaping of the road; improper spacing and sizing of drainage inlets, and blocked culverts usually cause poor drainage.

PAVEMENT POLISHING



This condition is characterized by the wearing away of the pavement surface caused by the dislodging of aggregate particles and loss of asphalt binder. The pavement surface becomes smooth and rounded (and subsequently slippery) under the action of traffic. Polishing is normally caused by oxidation of the asphalt binder of the mix, resulting in loss of flexibility and ability to hold the aggregate.

PAVEMENT DISTORTION



This condition is characterized by the pavement being out of its natural or proper shape. Pavement distortions can be caused by base or sub-grade failure, shoving, or rutting.

TRANSVERSE and/or LONGITUDINAL CRACKS



This condition is characterized by visible fractures or separations of the pavement surface occurring transversely across or longitudinally down the roadway. This cracking may be caused by a poorly constructed paving joint, shrinkage of the surface due to low temperature, asphalt hardening, or a reflection crack from an underlying rigid base.

RIDING QUALITY

This condition is characterized by the feel a driver gets when driving an automobile through a segment of a roadway at the posted speed limit. If the pavement appeared to be new and there was no discernible roughness felt in the ride of the vehicle, the pavement smoothness was rated excellent. The pavement smoothness was rated good if the ride of the vehicle remained smooth, yet the pavement appeared to show some signs of distress. A rating of fair for pavement smoothness was given if there was notable roughness felt in the ride of the vehicle but little discomfort sensed by the driver. If there was substantial roughness felt in the ride of the vehicle, and it became necessary to lower the speed of the vehicle below the posted limit, the pavement smoothness was rated as poor.

Upon completion of the roadway assessment, the roadway condition ratings were used to compare and evaluate pavement maintenance priorities across the entire pavement network within the Township of Westampton. Table 1 below outlines the repair types and the condition rating ranges associated with each type. Although these ranges are typical of recommended repairs, other factors such as the types of pavement distresses and other roadway safety considerations may result in a repair recommendation outside of these typical ranges for certain roads. Additionally, it indicates costs per square yard for that repair type. This cost is based on 2016 dollars and includes soft costs (engineering, design, inspection, and contract administration). For the Township to budget accordingly for a total project cost per year, soft costs will be added.

TABLE 1: RANGE OF PAVEMENT CONDITION RATINGS & REPAIR TYPE PARAMETERS

REPAIR TYPE	ESTIMATED COST PER SQUARE YARD (*)	CONDITION RATING TO DETERMINE REPAIR TYPE
Seal Coating	\$11.00	90 to 100
Milling & Resurfacing	\$26.00	89 to 65
Full Depth Reconstruction	\$46.00	64 to 0

* Based on 2016 Construction Dollars

BENEFITS OF A ROADWAY MAINTENANCE PROGRAM:

- ✓ Saves Tax Dollars
- ✓ Planning tool to guide the community, government officials, MUA and utilities
- ✓ May be helpful in grant applications
- ✓ Provides an integral part of your ADA Compliance Transition Plan
- ✓ Pavement life is maximized and overall riding quality and structural integrity is improved
- ✓ Can serve as a database/inventory of municipal roads
- ✓ Promotes Green Technology

There are two types of full-depth reconstruction (FDR) treatments common in the industry. The first treatment consists of the excavation/removal and replacement of both the base and surface courses. The second treatment consists of the in-place pulverization and stabilization of the existing road and overlaying with hot mix asphalt surface course, also known as Pulverization, Stabilization, and Overlay (PSO).

These two types of reconstruction treatments are dictated by the underlying sub-surface soils. Sub-surface soils are identified by their color, texture, soil structure, and soil consistency. When the sub-surface soils are clayey, fine in texture, very sticky, and extremely firm, a full depth reconstruction via excavation may be recommended. When the sub-surface soils are sandy, coarse to moderately coarse in texture, dry, loose, and soft, a pulverization, stabilization, and overlay (PSO) may be recommended.

Each year, a verification of the recommended treatment should be made to ensure it is the proper treatment based on the present condition of the roadway during the particular year of repair. Prior to resurfacing, each roadway segment should have pavement cores obtained with subsurface investigations to determine soil conditions and pavement thickness to verify proper roadway treatment.

The recommendations of this Program should be flexible to the Township's needs and should be modified for any unpredictable pavement behaviors, deterioration, or financial constraints in any one particular year.

The Roadway Maintenance Program should be completely updated every five to seven years to ensure it remains a valuable tool in managing the maintenance schedule of the Township. The re-evaluation should be performed to ensure proper ratings and repair schedules have been met and are consistent, since road pavements will deteriorate at varying rates.





A

SUMMARY OF YEARLY MAINTENANCE COSTS

ROADWAY MAINTENANCE PROGRAM, WESTAMPTON TOWNSHIP, NJ

	YEAR 1	YEAR 2	YEAR 3	YEAR 4	YEAR 5	YEAR 6
RECONSTRUCT	\$147,660	\$0	\$0	\$0	\$0	\$0
MILL & RESURFACE	\$664,212	\$365,010	\$129,446	\$64,379	\$338,375	\$437,404
SEAL COAT	\$0	\$426,949	\$654,097	\$757,390	\$480,447	\$360,238
TOTAL	\$811,872	\$791,959	\$783,543	\$821,769	\$818,822	\$797,641

	YEAR 7	YEAR 8	YEAR 9	YEAR 10	YEAR 11	YEAR 12
RECONSTRUCT	\$0	\$0	\$0	\$0	\$0	\$0
MILL & RESURFACE	\$828,599	\$266,219	\$782,312	\$733,961	\$757,845	\$786,332
SEAL COAT	\$0	\$539,879	\$53,073	\$62,894	\$35,524	\$0
TOTAL	\$828,599	\$806,098	\$835,384	\$796,855	\$793,369	\$786,332

	YEAR 13	YEAR 14	YEAR 15
RECONSTRUCT	\$0	\$0	\$0
MILL & RESURFACE	\$755,677	\$773,001	\$558,571
SEAL COAT	\$0	\$0	\$113,390
TOTAL	\$755,677	\$773,001	\$671,961



B

ROADWAY SEGMENTS LISTED ALPHABETICALLY

ROADWAY MAINTENANCE PROGRAM, WESTAMPTON TOWNSHIP, NJ

STREET NAME	FROM	TO	LENGTH	WIDTH	SQUARE YARDS	ROADWAY CONDITION RATING IN 2016	TREATMENT	ESTIMATED CONSTRUCTION COST IN 2016	ESTIMATED ENGINEERING & INSPECTION COST	ESTIMATED PROJECT TOTAL	YEAR OF REPAIR
Amara Lane	CR 635	Amara Lane	2745	30	9150	84	Mill & Resurface	\$210,450	\$31,568	\$242,018	7
Augusta Drive	W Country Club Drive	W Country Club Drive	1300	31	4477	88	Mill & Resurface	\$102,971	\$15,446	\$118,417	5
Baldwin Lane	CR 626	Kanabe Drive	465	30	1550	82	Mill & Resurface	\$35,650	\$5,348	\$40,998	11
Bally Bunion Court	Augusta Drive	Cul-De-Sac	220	31	1110	90	Mill & Resurface	\$25,530	\$3,830	\$29,360	5
Bay Hill Court	Augusta Drive	Cul-De-Sac	305	31	1386	90	Mill & Resurface	\$31,878	\$4,782	\$36,660	5
Beacon Street	Greenwich Drive	Greenwich Drive	955	34	3608	84	Mill & Resurface	\$82,984	\$12,448	\$95,432	11
Beaumont Place	Yorkshire Lane	Dead End	880	30	2950	98	Seal Coat	\$29,500	\$4,425	\$33,925	6
Bentwood Drive	Sharpless Boulevard	Sharpless Boulevard	2300	34	8700	92	Seal Coat	\$87,000	\$13,050	\$100,050	2
Berkshire Court	Berkshire Road	Cul-De-Sac	225	29	975	86	Mill & Resurface	\$22,425	\$3,364	\$25,789	12
Berkshire Road	Tarnsfield Road	Orchard Lane	1070	29	3448	82	Mill & Resurface	\$79,304	\$11,896	\$91,200	12
Birkdale Court	Augusta Drive	Cul-De-Sac	264	31	1220	92	Mill & Resurface	\$28,060	\$4,209	\$32,269	5
Bloomfield Drive	Pennington Drive	Devonshire Drive	2340	34	8840	82	Mill & Resurface	\$203,320	\$30,498	\$233,818	14
Blue Jay Hill Road	CR 626	Hillside Road	1475	15	2459	82	Mill & Resurface	\$56,557	\$8,484	\$65,041	9
Bridge Street	CR 626	Main Street	850	27	2550	90	Seal Coat	\$25,500	\$3,825	\$29,325	4
Bridge Street (1)	Main Street	Terminus	485	18	970	84	Mill & Resurface	\$22,310	\$3,347	\$25,657	8
Brighton Court	Brighton Road	Cul-De-Sac	200	29	915	86	Mill & Resurface	\$21,045	\$3,157	\$24,202	12
Brighton Road	Tarnsfield Road	Tarnsfield Road	2040	29	6574	88	Seal Coat	\$65,740	\$9,861	\$75,601	3
Chase Court	Quail Hollow Drive	Cul-De-Sac	256	29	1205	86	Mill & Resurface	\$27,715	\$4,157	\$31,872	12
Church Street	CR 626	Dead End	1135	12	1514	72	Mill & Resurface	\$34,822	\$5,223	\$40,045	1
Churchill Street	Greenwich Drive	Greenwich Drive	670	29	2159	88	Seal Coat	\$21,590	\$3,239	\$24,829	3
Country Lane	Rolling Hills Drive	North Hills Drive	675	34	2550	84	Mill & Resurface	\$58,650	\$8,798	\$67,448	7
Creek Road	Hillside Road	4 Creek Road	320	14	498	68	Mill & Resurface	\$11,454	\$1,718	\$13,172	1
Creek Road	4 Creek Road	Dead End	705	14	1097	86	Mill & Resurface	\$25,231	\$3,785	\$29,016	9
Cypress Point Road	W Country Club Drive	W Country Club Drive	1580	31	5443	92	Seal Coat	\$54,430	\$8,165	\$62,595	5
Dale Road	CR 639	CR 638	675	18	1350	92	Seal Coat	\$13,500	\$2,025	\$15,525	4
David Street	Pennington Drive	Holly Lane	285	31	982	84	Seal Coat	\$9,820	\$1,473	\$11,293	4
David Street	Lambert Drive	Holly Lane	730	34	2758	98	Mill & Resurface	\$63,434	\$9,515	\$72,949	14
Deerwood Drive	E Country Club Drive	CR 630	500	50	2778	92	Seal Coat	\$27,780	\$4,167	\$31,947	6
Devonshire Drive	Tarnsfield Road	Lancaster Drive	1930	29	6219	86	Mill & Resurface	\$143,037	\$21,456	\$164,493	13
Dogwood Drive	CR 638	Township Line	1185	28	3686	90	Seal Coat	\$36,860	\$5,529	\$42,389	4
Doral Drive	Cypress Point Road	Cypress Point Road	570	31	1964	94	Seal Coat	\$19,640	\$2,946	\$22,586	5
Dover Court	Dover Road	Cul-De-Sac	242	29	1175	88	Mill & Resurface	\$27,025	\$4,054	\$31,079	12
Dover Road	Tarnsfield Road	Berkshire Road	3030	29	9764	84	Seal Coat	\$97,640	\$14,646	\$112,286	4
Dublin Drive	Devonshire Drive	Heath Drive	675	29	2175	92	Mill & Resurface	\$50,025	\$7,504	\$57,529	13
Dunes Court	W Country Club Drive	Cul-De-Sac	490	30	1985	94	Mill & Resurface	\$45,655	\$6,848	\$52,503	5

STREET NAME	FROM	TO	LENGTH	WIDTH	SQUARE YARDS	ROADWAY CONDITION RATING IN 2016	TREATMENT	ESTIMATED CONSTRUCTION COST IN 2016	ESTIMATEED ENGINEERING & INSPECTION COST	ESTIMATED PROJECT TOTAL	YEAR OF REPAIR
East Country Club Drive	Deerwood Drive	Cul-De-Sac	3275	32	11645	90	Seal Coat	\$116,450	\$17,468	\$133,918	6
East Dogwood Court	CR 638	Cul-De-Sac	1455	30	4850	92	Seal Coat	\$48,500	\$7,275	\$55,775	4
East Park Drive	CR 628	Sanitary Pump Station	1150	30	3833	90	Seal Coat	\$38,330	\$5,750	\$44,080	9
East Park Drive (2)	Sanitary Pump Station	Cul-De-Sac	2270	30	8770	94	Seal Coat	\$87,700	\$13,155	\$100,855	8
East Stokes Road	Main Street	Township Line	135	26	390	76	Mill & Resurface	\$8,970	\$1,346	\$10,316	1
Fairfield Drive	Fernbrooke Drive	Mayfaire Circle	555	30	1850	96	Seal Coat	\$18,500	\$2,775	\$21,275	2
Fenwick Court	Sherwood Lane	Cul-De-Sac	175	30	880	94	Mill & Resurface	\$20,240	\$3,036	\$23,276	10
Fernbrooke Drive	Hanock Lane	Cul-De-Sac	1710	30	5700	98	Seal Coat	\$57,000	\$8,550	\$65,550	4
Fieldcrest Drive	Sharpless Boulevard	Sharpless Boulevard	1170	34	4420	90	Seal Coat	\$44,200	\$6,630	\$50,830	2
Forceville Drive	Forest View Drive	Schoolhouse Road	670	28	2085	76	Reconstruct	\$83,400	\$12,510	\$95,910	1
Forest View Drive	CR 626	CR 637	910	30	3034	92	Seal Coat	\$30,340	\$4,551	\$34,891	3
Fort Drive	Russo Drive	Holly Lane	1225	34	4828	88	Seal Coat	\$46,280	\$6,942	\$53,222	3
Fort Place	Fort Drive	Cul-De-Sac	195	34	1055	84	Mill & Resurface	\$24,265	\$3,640	\$27,905	13
Gilbert Road	CR 639	Township Line	645	20	1434	84	Mill & Resurface	\$32,982	\$4,947	\$37,929	9
Glascow Road	Dover Road	Berkshire Road	1180	29	3803	84	Mill & Resurface	\$87,469	\$13,120	\$100,589	12
Green Street	Main Street	Dead End	645	18	1290	94	Seal Coat	\$12,900	\$1,935	\$14,835	4
Greenbrier Drive	W Country Club Drive	W Country Club Drive	1755	31	6485	90	Seal Coat	\$64,850	\$9,728	\$74,578	5
Greenwich Drive	Quail Hollow Drive	Greenwich Drive	3310	31	11402	80	Mill & Resurface	\$262,246	\$39,337	\$301,583	11
Greenwich Drive	CR 630	Quail Hollow Road	695	40	3089	88	Seal Coat	\$30,890	\$4,634	\$35,524	11
Hanock Lane	Schoolhouse Drive	New Jersey Turnpike	3105	40	13800	86	Mill & Resurface	\$317,400	\$47,610	\$365,010	2
Heath Drive	Lancaster Drive	Bloomfield Drive	590	29	1902	90	Seal Coat	\$19,020	\$2,853	\$21,873	3
Hightgate Court	Quail Hollow Drive	Cul-De-Sac	290	29	1170	88	Mill & Resurface	\$26,910	\$4,037	\$30,947	12
Hill Road	CR 638	Township Line	2130	26	6153	92	Seal Coat	\$61,530	\$9,230	\$70,760	4
Hillside Road	Blue Jay Hill Road	Terminus	705	16	1254	84	Mill & Resurface	\$28,842	\$4,326	\$33,168	9
Holly Lane	CR 541	Township Line	445	34	1682	78	Mill & Resurface	\$38,686	\$5,803	\$44,489	1
Holly Lane	Bloomfield Drive	CR 541	2120	40	9190	88	Mill & Resurface	\$21,370	\$3,706	\$24,076	15
Holly Lane	Bloomfield Drive	CR 626	2275	40	9860	98	Seal Coat	\$98,600	\$14,790	\$113,390	15
Holly Tree Court	CR 637	Cul-De-Sac	435	35	2050	82	Mill & Resurface	\$47,150	\$7,073	\$54,223	11
Howell Drive	Lambert Drive	Dead End	825	34	4725	80	Mill & Resurface	\$108,675	\$16,301	\$124,976	14
Hyde Lane	Sherwood Lane	Sherwood Lane	595	30	1984	86	Mill & Resurface	\$45,632	\$6,845	\$52,477	10
Ikea Drive	CR 635	Cul-De-Sac	60	40	2934	88	Mill & Resurface	\$67,482	\$10,122	\$77,604	8

STREET NAME	FROM	TO	LENGTH	WIDTH	SQUARE YARDS	ROADWAY CONDITION RATING IN 2016	TREATMENT	ESTIMATED CONSTRUCTION COST IN 2016	ESTIMATEED ENGINEERING & INSPECTION COST	ESTIMATED PROJECT TOTAL	YEAR OF REPAIR
Ikea Drive (2)	Cul-De-Sac	Stemmers Lane	3400	30	11333	94	Seal Coat	\$113,330	\$17,000	\$130,330	8
Kanabe Drive	Baldwin Lane	Baldwin Lane	1260	30	4200	86	Mill & Resurface	\$96,600	\$14,490	\$111,090	11
Kings Road	CR 630	CR 639	9165	21	21383	88	Mill & Resurface	\$491,809	\$73,771	\$565,580	9
Kingswood Court	Kings Road	Cul-De-Sac	585	30	1950	98	Mill & Resurface	\$44,850	\$6,728	\$51,578	9
Lambert Drive	CR 626	Bloomfield Drive	2100	34	7934	76	Mill & Resurface	\$182,482	\$27,372	\$209,854	1
Lancaster Court	Lancaster Drive	Cul-De-Sac	595	29	2345	92	Mill & Resurface	\$53,935	\$8,090	\$62,025	13
Lancaster Drive	Heath Drive	CR 626	1345	29	4334	94	Seal Coat	\$43,340	\$6,501	\$49,841	3
Lancaster Drive	Heath Drive	Devonshire Drive	565	29	1821	86	Mill & Resurface	\$41,883	\$6,282	\$48,165	13
Laurel Tree Court	Pine Tree Drive	Cul-De-Sac	225	30	1625	96	Mill & Resurface	\$37,375	\$5,606	\$42,981	11
Laurel Tree Drive	Forest View Drive	Pinetree Drive	1050	30	1875	96	Seal Coat	\$18,750	\$2,813	\$21,563	3
Lawrence Lane	Tallowood Drive	Sherwood Lane	1500	30	5635	86	Mill & Resurface	\$129,605	\$19,441	\$149,046	10
Lundys Alley	Green Street	Dead End	155	13	225	94	Seal Coat	\$2,250	\$338	\$2,588	8
Main Street	Valley Farm Road	ABCO Federal Credit Union	980	23	2505	82	Mill & Resurface	\$57,615	\$8,642	\$66,257	3
Main Street (2)	ABCO Federal Credit Union	Bridge Street	650	23	1660	94	Seal Coat	\$16,600	\$2,490	\$19,090	4
Main Street (3)	Bridge Street	Township Limits	1500	24	4000	86	Mill & Resurface	\$92,000	\$13,800	\$105,800	8
Manor Drive	East Dogwood Court	CR 639	1600	30	5333	90	Seal Coat	\$53,330	\$8,000	\$61,330	4
Maple Tree Drive	CR 637	CR 630	1985	31	6838	88	Seal Coat	\$68,380	\$10,257	\$78,637	3
Mayfaire Circle	Fernbrooke Drive	Fernbrooke Drive	1906	30	6353	94	Seal Coat	\$63,530	\$9,530	\$73,060	3
Meadowbrooke Drive	CR 635	Sharpless Boulevard	1010	34	3816	92	Seal Coat	\$38,160	\$5,724	\$43,884	2
Mohican Trail	CR 626	Dead End	675	15	1125	68	Reconstruct	\$45,000	\$6,750	\$51,750	1
Muirfield Court	Greenbrier Drive	Cul-De-Sac	250	31	1220	94	Mill & Resurface	\$28,060	\$4,209	\$32,269	5
Municipal Drive	CR 626	Terminus	300	34	1133	76	Mill & Resurface	\$26,059	\$3,909	\$29,968	1
Murray Avenue	Blue Jay Hill Road	Dead End	335	21	782	94	Seal Coat	\$7,820	\$1,173	\$8,993	9
North Hill Drive	Rolling Hills Drive	Rolling Hills Drive	2355	34	8896	76	Mill & Resurface	\$204,608	\$30,691	\$235,299	7
Nonwyn Lane	CR 630	Smith Lane	365	34	1379	88	Seal Coat	\$13,790	\$2,069	\$15,859	3
Oak Tree Court	Maple Tree Drive	Cul-De-Sac	1835	30	6117	94	Seal Coat	\$61,170	\$9,176	\$70,346	3
Oakcrest Lane	North Hill Drive	Country Lane	530	34	2002	86	Mill & Resurface	\$46,046	\$6,907	\$52,953	7
Ogden Drive	Lambert Drive	Holly Lane	780	34	2947	86	Mill & Resurface	\$67,781	\$10,167	\$77,948	14
Olive Street	Main Street	Second Street	420	21	980	90	Seal Coat	\$9,800	\$1,470	\$11,270	4
Olive Street (2)	Second Street	Third Street	430	21	1004	78	Mill & Resurface	\$23,092	\$3,464	\$26,556	1
Orchard Lane	CR 630	Dover Road	1600	29	5156	82	Mill & Resurface	\$118,588	\$17,788	\$136,376	15
Partree Road	Glasgow Road	Dover Road	285	29	919	88	Seal Coat	\$9,190	\$1,379	\$10,569	3
Patterson Drive	Pennington Drive	Holly Lane	485	34	1835	86	Mill & Resurface	\$42,205	\$6,331	\$48,536	13
Pebble Beach Drive	W Country Club Drive	Greenbrier Drive	395	31	1361	94	Seal Coat	\$13,610	\$2,042	\$15,652	5
Pennington Drive	Bloomfield Drive	Sealey Drive	1655	34	6253	80	Mill & Resurface	\$143,819	\$21,573	\$165,392	13
Pennington Drive	Howell Drive	Sealey Drive	2635	34	9955	82	Mill & Resurface	\$228,965	\$34,345	\$263,310	14
Pinehurst Court	Greenbrier Drive	Cul-De-Sac	310	31	1395	94	Mill & Resurface	\$32,085	\$4,813	\$36,898	5
Pinetree Drive	Laurel Tree Drive	Oak Tree Court	905	30	3017	98	Seal Coat	\$30,170	\$4,526	\$34,696	3
Price Drive	Lambert Drive	Holly Lane	685	34	2588	90	Seal Coat	\$25,880	\$3,882	\$29,762	8

STREET NAME	FROM	TO	LENGTH	WIDTH	SQUARE YARDS	ROADWAY CONDITION RATING IN 2016	TREATMENT	ESTIMATED CONSTRUCTION COST IN 2016	ESTIMATEED ENGINEERING & INSPECTION COST	ESTIMATED PROJECT TOTAL	YEAR OF REPAIR
Quail Hollow Road	Greenwich Drive	Tamsfield Road	2510	29	8088	86	Seal Coat	\$80,880	\$12,132	\$93,012	4
Rancocas Court	CR 626	Cul-De-Sac	158	24	760	74	Mill & Resurface	\$17,480	\$2,622	\$20,102	1
Roberts Drive	CR 638	Treetop Lane	3740	30	12470	80	Mill & Resurface	\$286,810	\$43,022	\$329,832	6
Rolling Hills Drive	South Hill Drive	CR 635	995	40	4423	84	Mill & Resurface	\$101,729	\$15,259	\$116,988	7
Rolling Hills Drive East	CR 635	Winstead Drive	320	40	1422	84	Mill & Resurface	\$32,706	\$4,906	\$37,612	8
Russo Drive	Bloomfield Drive	Dead End	750	34	2834	88	Seal Coat	\$28,340	\$4,251	\$32,591	3
Saint Andrew's Court	E Country Club Drive	E Country Club Drive	820	31	2825	94	Seal Coat	\$28,250	\$4,238	\$32,488	6
Sawgrass Drive	W Country Club Drive	W Country Club Drive	1800	31	6200	94	Seal Coat	\$62,000	\$9,300	\$71,300	5
Schoolhouse Road	CR 626	Sherwood Lane	820	30	2734	88	Mill & Resurface	\$62,882	\$9,432	\$72,314	11
Second Street	Green Street	Bridge Street	1075	20	2389	80	Mill & Resurface	\$54,947	\$8,242	\$63,189	3
Second Street (2)	Bridge Street	Willis Street	600	20	1333	76	Mill & Resurface	\$30,659	\$4,599	\$35,258	1
Seeley Drive	Orchard Lane	Holly Lane	765	29	2465	94	Seal Coat	\$24,650	\$3,698	\$28,348	3
Seeley Drive	Pennington Drive	Holly Lane	860	34	3249	84	Mill & Resurface	\$74,727	\$11,209	\$85,936	15
Sharpless Boulevard	CR 635	Meadowbrooke Drive	3275	34	12371	90	Seal Coat	\$123,710	\$18,557	\$142,267	2
Sherwood Court	Sherwood Lane	Cul-De-Sac	215	30	985	92	Seal Coat	\$9,850	\$1,478	\$11,328	10
Sherwood Lane	Tallowood Drive	Tallowood Drive	5300	30	18255	80	Mill & Resurface	\$419,865	\$62,980	\$482,845	10
Smith Lane	CR 541	Township Line	800	34	2023	80	Mill & Resurface	\$46,529	\$6,979	\$53,508	15
South Hill Drive	Rolling Hills Drive	Rolling Hills Drive	1140	34	4306	80	Mill & Resurface	\$99,038	\$14,856	\$113,894	7
Spyglass Court	E Country Club Drive	Cul-De-Sac	730	33	2677	90	Seal Coat	\$26,770	\$4,016	\$30,786	6
Steinway Court	Kanabe Drive	Cul-De-Sac	445	30	1483	88	Mill & Resurface	\$34,109	\$5,116	\$39,225	11
Stemmers Lane	CR 630	Terminus	4500	30	15000	96	Seal Coat	\$150,000	\$22,500	\$172,500	8
Stratton Drive	Pennington Drive	Cul-De-Sac	1085	34	2895	90	Seal coat	\$28,950	\$4,343	\$33,293	8
Stratton Drive	Seeley Drive	Cul-de-sac	200	34	1500	90	Mill & Resurface	\$34,500	\$5,175	\$39,675	15
Tallowood Drive	CR626	Greenwich Drive	1545	40	6867	80	Mill & Resurface	\$157,941	\$23,691	\$181,632	13
Tarnsfield Road	Greenwich Drive	CR 630	2920	40	12978	84	Mill & Resurface	\$298,494	\$44,774	\$343,268	12
Tenby Court	Quail Hollow Drive	Cul-De-Sac	360	29	1160	84	Mill & Resurface	\$26,680	\$4,002	\$30,682	12
Thames Lane	Sherwood Lane	Sherwood Lane	1345	30	4484	90	Seal Coat	\$44,840	\$6,726	\$51,566	10
Third Street	Cul-De-Sac	Olive Street	350	19	739	78	Mill & Resurface	\$16,997	\$2,550	\$19,547	8
Third Street (2)	Olive Street	Bridge Street	530	19	1119	92	Seal Coat	\$11,190	\$1,679	\$12,869	4
Treetop Lane	Roberts Drive	CR 638	1220	30	4067	82	Mill & Resurface	\$93,541	\$14,031	\$107,572	6
Tulip Tree Drive	Dogwood Drive	Cul-De-Sac	730	30	2434	78	Mill & Resurface	\$55,982	\$8,397	\$64,379	4
Valley Farm Road	CR 635	Main Street	1920	24	6400	92	Seal Coat	\$64,000	\$9,600	\$73,600	4
Welsford Way	Yorkshire Lane	CR 628	1835	30	6117	98	Seal Coat	\$61,170	\$9,176	\$70,346	6
West Country Club Drive	Deerwood Drive	Cul-De-Sac	5555	32	20325	90	Seal Coat	\$203,250	\$30,488	\$233,738	5

STREET NAME	FROM	TO	LENGTH	WIDTH	SQUARE YARDS	ROADWAY CONDITION RATING IN 2016	TREATMENT	ESTIMATED CONSTRUCTION COST IN 2016	ESTIMATED ENGINEERING & INSPECTION COST	ESTIMATED PROJECT TOTAL	YEAR OF REPAIR
West Maple Tree Drive	CR 637	CR 637	1840	30	6135	90	Seal Coat	\$61,350	\$9,203	\$70,553	8
Western Drive	CR 541	Terminus	1340	40	5955	90	Seal Coat	\$59,550	\$8,933	\$68,483	4
Westwind Way	Sharpless	Sharpless	945	34	3570	94	Seal Coat	\$35,700	\$5,355	\$41,055	2
Whitlow Drive	Tarnsfield Road	Bloomfield Drive	870	30	2900	88	Mill & Resurface	\$66,700	\$10,005	\$76,705	12
Wickham Court	Wickham Lane	Cul-De-Sac	208	30	995	90	Mill & Resurface	\$22,885	\$3,433	\$26,318	10
Wickham Lane	Sherwood Lane	Sherwood Lane	735	30	2450	90	Seal Coat	\$24,500	\$3,675	\$28,175	3
Wildberry Drive	Sharpless Boulevard	Fieldcrest Drive	635	34	2399	92	Seal Coat	\$23,990	\$3,599	\$27,589	2
Wills Avenue	Main Street	Second Street	360	20	800	74	Mill & Resurface	\$18,400	\$2,760	\$21,160	1
Winstead Drive	Cul-De-Sac	Cul-De-Sac	2135	34	8064	74	Mill & Resurface	\$185,472	\$27,821	\$213,293	1
Yorkshire Lane	CR 628	Welsford Way	700	30	2333	98	Seal Coat	\$23,330	\$3,500	\$26,830	6



ROADWAY SEGMENTS LISTED BY "CONDITION RATING"

ROADWAY MAINTENANCE PROGRAM, WESTAMPTON TOWNSHIP, NJ

STREET NAME	FROM	TO	LENGTH	WIDTH	SQUARE YARDS	ROADWAY CONDITION RATING IN 2016	TREATMENT	ESTIMATED CONSTRUCTION COST IN 2016	ESTIMATED ENGINEERING & INSPECTION COST	ESTIMATED PROJECT TOTAL	YEAR OF REPAIR
Creek Road	Hillside Road	4 Creek Road	320	14	498	68	Mill & Resurface	\$11,454	\$1,718	\$13,172	1
Mohican Trail	CR 626	Dead End	675	15	1125	68	Reconstruct	\$45,000	\$6,750	\$51,750	1
Church Street	CR 626	Dead End	1135	12	1514	72	Mill & Resurface	\$34,822	\$5,223	\$40,045	1
Rancocas Court	CR 626	Cul-De-Sac	158	24	760	74	Mill & Resurface	\$17,480	\$2,622	\$20,102	1
Wills Avenue	Main Street	Second Street	360	20	800	74	Mill & Resurface	\$18,400	\$2,760	\$21,160	1
Winstead Drive	Cul-De-Sac	Cul-De-Sac	2135	34	8064	74	Mill & Resurface	\$185,472	\$27,821	\$213,293	1
East Stokes Road	Main Street	Township Line	135	26	390	76	Mill & Resurface	\$8,970	\$1,346	\$10,316	1
Forceville Drive	Forest View Drive	Schoolhouse Road	670	28	2085	76	Reconstruct	\$83,400	\$12,510	\$95,910	1
Lambert Drive	CR 626	Bloomfield Drive	2100	34	7934	76	Mill & Resurface	\$182,482	\$27,372	\$209,854	1
Municipal Drive	CR 626	Terminus	300	34	1133	76	Mill & Resurface	\$26,059	\$3,909	\$29,968	1
North Hill Drive	Rolling Hills Drive	Rolling Hills Drive	2355	34	8996	76	Mill & Resurface	\$204,608	\$30,691	\$235,299	7
Second Street (2)	Bridge Street	Willis Street	600	20	1333	76	Mill & Resurface	\$30,659	\$4,599	\$35,258	1
Holly Lane	CR 541	Township Line	445	34	1682	78	Mill & Resurface	\$38,686	\$5,803	\$44,489	1
Olive Street (2)	Second Street	Third Street	430	21	1004	78	Mill & Resurface	\$23,092	\$3,464	\$26,556	1
Third Street	Cul-De-Sac	Olive Street	350	19	739	78	Mill & Resurface	\$16,997	\$2,550	\$19,547	8
Tulip Tree Drive	Dogwood Drive	Cul-De-Sac	730	30	2434	78	Mill & Resurface	\$55,982	\$8,397	\$64,379	4
Glascow Road	Dover Road	Berkshire Road	1180	29	3803	80	Mill & Resurface	\$87,469	\$13,120	\$100,589	12
Greenwich Drive	Quail Hollow Drive	Greenwich Drive	3310	31	11402	80	Mill & Resurface	\$262,246	\$39,337	\$301,583	11
Howell Drive	Lambert Drive	Dead End	825	34	4725	80	Mill & Resurface	\$108,675	\$16,301	\$124,976	14
Pennington Drive	Bloomfield Drive	Seeley Drive	1655	34	6253	80	Mill & Resurface	\$143,819	\$21,573	\$165,392	13
Roberts Drive	CR 638	Treetop Lane	3740	30	12470	80	Mill & Resurface	\$286,810	\$43,022	\$329,832	6
Second Street	Green Street	Bridge Street	1075	20	2389	80	Mill & Resurface	\$54,947	\$8,242	\$63,189	3
Shenwood Lane	Tallowood Drive	Tallowood Drive	5300	30	18255	80	Mill & Resurface	\$419,865	\$62,980	\$482,845	10
Smith Lane	CR 541	Township Line	800	34	2023	80	Mill & Resurface	\$46,529	\$6,979	\$53,508	15
South Hill Drive	Rolling Hills Drive	Rolling Hills Drive	1140	34	4306	80	Mill & Resurface	\$99,038	\$14,856	\$113,894	7
Tallowood Drive	CR626	Greenwich Drive	1545	40	6867	80	Mill & Resurface	\$157,941	\$23,691	\$181,632	13
Baldwin Lane	CR 626	Kanabe Drive	465	30	1550	82	Mill & Resurface	\$35,650	\$5,348	\$40,998	11
Berkshire Road	Tarnsfield Road	Orchard Lane	1070	29	3448	82	Mill & Resurface	\$79,304	\$11,896	\$91,200	12
Bloomfield Drive	Pennington Drive	Devonshire Drive	2340	34	8840	82	Mill & Resurface	\$203,320	\$30,498	\$233,818	14
Blue Jay Hill Road	CR 626	Hillside Road	1475	15	2459	82	Mill & Resurface	\$56,557	\$8,484	\$65,041	9
Holly Tree Court	CR 637	Cul-De-Sac	435	35	2050	82	Mill & Resurface	\$47,150	\$7,073	\$54,223	11
Main Street	Valley Farm Road	ABC Federal Credit Union	980	23	2505	82	Mill & Resurface	\$57,615	\$8,642	\$66,257	3
Orchard Lane	CR 630	Dover Road	1600	29	5156	82	Mill & Resurface	\$118,538	\$17,788	\$136,376	15
Pennington Drive	Howell Drive	Seeley Drive	2635	34	9955	82	Mill & Resurface	\$228,965	\$34,345	\$263,310	14
Treetop Lane	Roberts Drive	CR 638	1220	30	4067	82	Mill & Resurface	\$93,541	\$14,031	\$107,572	6
Amara Lane	CR 635	Amara Lane	2745	30	9150	84	Mill & Resurface	\$210,450	\$31,568	\$242,018	7
Beacon Street	Greenwich Drive	Greenwich Drive	955	34	3608	84	Mill & Resurface	\$82,984	\$12,448	\$95,432	11
Bridge Street (1)	Main Street	Terminus	485	18	970	84	Mill & Resurface	\$22,310	\$3,347	\$25,657	8
Country Lane	Rolling Hills Drive	North Hills Drive	675	34	2550	84	Mill & Resurface	\$58,650	\$8,798	\$67,448	7

STREET NAME	FROM	TO	LENGTH	WIDTH	SQUARE YARDS	ROADWAY CONDITION RATING IN 2016	TREATMENT	ESTIMATED CONSTRUCTION COST IN 2016	ESTIMATEED ENGINEERING & INSPECTION COST	ESTIMATED PROJECT TOTAL	YEAR OF REPAIR
David Street	Pennington Drive	Holly Lane	285	31	982	84	Seal Coat	\$9,820	\$1,473	\$11,293	4
Dover Road	Tarnsfield Road	Berkshire Road	3030	29	9764	84	Seal Coat	\$97,640	\$14,646	\$112,286	4
Fort Place	Fort Drive	Cul-De-Sac	195	34	1055	84	Mill & Resurface	\$24,265	\$3,640	\$27,905	13
Gilbert Road	CR 639	Township Line	645	20	1434	84	Mill & Resurface	\$32,982	\$4,947	\$37,929	9
Hillside Road	Blue Jay Hill Road	Terminus	705	16	1254	84	Mill & Resurface	\$28,842	\$4,326	\$33,168	9
Rolling Hills Drive	South Hill Drive	CR 635	995	40	4423	84	Mill & Resurface	\$101,729	\$15,259	\$116,988	7
Rolling Hills Drive East	CR 635	Winstead Drive	320	40	1422	84	Mill & Resurface	\$32,706	\$4,906	\$37,612	8
Seeley Drive	Pennington Drive	Holly Lane	860	34	3249	84	Mill & Resurface	\$74,727	\$11,209	\$85,936	15
Tarnsfield Road	Greenwich Drive	CR 630	2920	40	12978	84	Mill & Resurface	\$298,494	\$44,774	\$343,268	12
Tenby Court	Quail Hollow Drive	Cul-De-Sac	360	29	1160	84	Mill & Resurface	\$26,680	\$4,002	\$30,682	12
Berkshire Court	Berkshire Road	Cul-De-Sac	225	29	975	86	Mill & Resurface	\$22,425	\$3,364	\$25,789	12
Brighton Court	Brighton Road	Cul-De-Sac	200	29	915	86	Mill & Resurface	\$21,045	\$3,157	\$24,202	12
Chase Court	Quail Hollow Drive	Cul-De-Sac	256	29	1205	86	Mill & Resurface	\$27,715	\$4,157	\$31,872	12
Creek Road	4 Creek Road	Dead End	705	14	1097	86	Mill & Resurface	\$25,231	\$3,785	\$29,016	9
Devonshire Drive	Tarnsfield Road	Lancaster Drive	1930	29	6219	86	Mill & Resurface	\$143,037	\$21,456	\$164,493	13
Hanock Lane	Schoolhouse Drive	New Jersey Turnpike	3105	40	13800	86	Mill & Resurface	\$317,400	\$47,610	\$365,010	2
Hyde Lane	Sherwood Lane	Sherwood Lane	595	30	1984	86	Mill & Resurface	\$45,632	\$6,845	\$52,477	10
Kanabe Drive	Baldwin Lane	Baldwin Lane	1260	30	4200	86	Mill & Resurface	\$96,600	\$14,490	\$111,090	11
Lancaster Drive	Heath Drive	Devonshire Drive	565	29	1821	86	Mill & Resurface	\$41,883	\$6,282	\$48,165	13
Lawrence Lane	Tallowood Drive	Sherwood Lane	1500	30	5635	86	Mill & Resurface	\$129,605	\$19,441	\$149,046	10
Main Street (3)	Bridge Street	Township Limits	1500	24	4000	86	Mill & Resurface	\$92,000	\$13,800	\$105,800	8
Oakcrest Lane	North Hill Drive	Country Lane	530	34	2002	86	Mill & Resurface	\$46,046	\$6,907	\$52,953	7
Ogden Drive	Lambert Drive	Holly Lane	780	34	2947	86	Mill & Resurface	\$67,781	\$10,167	\$77,948	14
Patterson Drive	Pennington Drive	Holly Lane	485	34	1835	86	Mill & Resurface	\$42,205	\$6,331	\$48,536	13
Quail Hollow Road	Greenwich Drive	Tarnsfield Road	2510	29	8088	86	Seal Coat	\$80,880	\$12,132	\$93,012	4
Augusta Drive	W Country Club Drive	W Country Club Drive	1300	31	4477	88	Mill & Resurface	\$102,971	\$15,446	\$118,417	5
Brighton Road	Tarnsfield Road	Tarnsfield Road	2040	29	6574	88	Seal Coat	\$65,740	\$9,861	\$75,601	3
Churchill Street	Greenwich Drive	Greenwich Drive	670	29	2159	88	Seal Coat	\$21,590	\$3,239	\$24,829	3
Dover Court	Dover Road	Cul-De-Sac	242	29	1175	88	Mill & Resurface	\$27,025	\$4,054	\$31,079	12
Fort Drive	Russo Drive	Holly Lane	1225	34	4628	88	Seal Coat	\$46,280	\$6,942	\$53,222	3
Greenwich Drive	CR 630	Quail Hollow Road	695	40	3089	88	Seal Coat	\$30,890	\$4,634	\$35,524	11
Highgate Court	Quail Hollow Drive	Cul-De-Sac	290	29	1170	88	Mill & Resurface	\$26,910	\$4,037	\$30,947	12
Holly Lane	Bloomfield Drive	CR 541	2120	40	9190	88	Mill & Resurface	\$211,370	\$31,706	\$243,076	15
Ikea Drive	CR 635	Cul-De-Sac	60	40	2934	88	Mill & Resurface	\$67,482	\$10,122	\$77,604	8
Kings Road	CR 630	CR 639	9165	21	21383	88	Mill & Resurface	\$491,809	\$73,771	\$565,580	9
Maple Tree Drive	CR 637	CR 630	1985	31	6838	88	Seal Coat	\$68,380	\$10,257	\$78,637	3

STREET NAME	FROM	TO	LENGTH	WIDTH	SQUARE YARDS	ROADWAY CONDITION RATING IN 2016	TREATMENT	ESTIMATED CONSTRUCTION COST IN 2016	ESTIMATEED ENGINEERING & INSPECTION COST	ESTIMATED PROJECT TOTAL	YEAR OF REPAIR
Norwyn Lane	CR 630	Smith Lane	365	34	1379	88	Seal Coat	\$13,790	\$2,069	\$15,859	3
Partree Road	Glascow Road	Dover Road	285	29	919	88	Seal Coat	\$9,190	\$1,379	\$10,569	3
Russo Drive	Bloomfield Drive	Dead End	750	34	2834	88	Seal Coat	\$28,340	\$4,251	\$32,591	3
Schoolhouse Road	CR 626	Sherwood Lane	820	30	2734	88	Mill & Resurface	\$62,882	\$9,432	\$72,314	11
Steinway Court	Kanabe Drive	Cul-De-Sac	445	30	1483	88	Mill & Resurface	\$34,109	\$5,116	\$39,225	11
Whitlow Drive	Tarnsfield Road	Bloomfield Drive	870	30	2900	88	Mill & Resurface	\$66,700	\$10,005	\$76,705	12
Bally Bunion Court	Augusta Drive	Cul-De-Sac	220	31	1110	90	Mill & Resurface	\$25,530	\$3,830	\$29,360	5
Bay Hill Court	Augusta Drive	Cul-De-Sac	305	31	1386	90	Mill & Resurface	\$31,878	\$4,782	\$36,660	5
Bridge Street	CR 626	Main Street	850	27	2550	90	Seal Coat	\$25,500	\$3,825	\$29,325	4
Dogwood Drive	CR 638	Township Line	1185	28	3686	90	Seal Coat	\$36,860	\$5,529	\$42,389	4
East Country Club Drive	Deenwood Drive	Cul-De-Sac	3275	32	11645	90	Seal Coat	\$116,450	\$17,468	\$133,918	6
East Park Drive	CR 628	Sanitary Pump Station	1150	30	3833	90	Seal Coat	\$38,330	\$5,750	\$44,080	9
Fieldcrest Drive	Sharpless Boulevard	Sharpless Boulevard	1170	34	4420	90	Seal Coat	\$44,200	\$6,630	\$50,830	2
Greenbrier Drive	W Country Club Drive	W Country Club Drive	1755	31	6485	90	Seal Coat	\$64,850	\$9,728	\$74,578	5
Heath Drive	Lancaster Drive	Bloomfield Drive	590	29	1902	90	Seal Coat	\$19,020	\$2,853	\$21,873	3
Manor Drive	East Dogwood Court	CR 639	1600	30	5333	90	Seal Coat	\$53,330	\$8,000	\$61,330	4
Olive Street	Main Street	Second Street	420	21	980	90	Seal Coat	\$9,800	\$1,470	\$11,270	4
Price Drive	Lambert Drive	Holly Lane	685	34	2588	90	Seal Coat	\$25,880	\$3,882	\$29,762	8
Sharpless Boulevard	CR 635	Meadowbrooke Drive	3275	34	12371	90	Seal Coat	\$123,710	\$18,557	\$142,267	2
Spyglass Court	E Country Club Drive	Cul-De-Sac	730	33	2677	90	Seal Coat	\$26,770	\$4,016	\$30,786	6
Stratton Drive	Pennington Drive	Cul-De-Sac	1085	34	2895	90	Seal coat	\$28,950	\$4,343	\$33,293	8
Stratton Drive	Seeley Drive	Cul-de-sac	200	34	1500	90	Mill & Resurface	\$34,500	\$5,175	\$39,675	15
Thames Lane	Sherwood Lane	Sherwood Lane	1345	30	4484	90	Seal Coat	\$44,840	\$6,726	\$51,566	10
West Country Club Drive	Deenwood Drive	Cul-De-Sac	5555	32	20325	90	Seal Coat	\$203,250	\$30,488	\$233,738	5
West Maple Tree Drive	CR 637	CR 637	1840	30	6135	90	Seal Coat	\$61,350	\$9,203	\$70,553	8
Western Drive	CR 541	Terminus	1340	40	5955	90	Seal Coat	\$59,550	\$8,933	\$68,483	4
Wickham Court	Wickham Lane	Cul-De-Sac	208	30	995	90	Mill & Resurface	\$22,885	\$3,433	\$26,318	10
Wickham Lane	Sherwood Lane	Sherwood Lane	735	30	2450	90	Seal Coat	\$24,500	\$3,675	\$28,175	3
Bentwood Drive	Sharpless Boulevard	Sharpless Boulevard	2300	34	8700	92	Seal Coat	\$87,000	\$13,050	\$100,050	2
Birkdale Court	Augusta Drive	Cul-De-Sac	264	31	1220	92	Mill & Resurface	\$28,060	\$4,209	\$32,269	5
Cyrpress Point Road	W Country Club Drive	W Country Club Drive	1580	31	5443	92	Seal Coat	\$54,430	\$8,165	\$62,595	5
Dale Road	CR 639	CR 638	675	18	1350	92	Seal Coat	\$13,500	\$2,025	\$15,525	4

STREET NAME	FROM	TO	LENGTH	WIDTH	SQUARE YARDS	ROADWAY CONDITION RATING IN 2016	TREATMENT	ESTIMATED CONSTRUCTION COST IN 2016	ESTIMATEED ENGINEERING & INSPECTION COST	ESTIMATED PROJECT TOTAL	YEAR OF REPAIR
Deerwood Drive	E Country Club Drive	CR 630	500	50	2778	92	Seal Coat	\$27,780	\$4,167	\$31,947	6
Dublin Drive	Devonshire Drive	Heath Drive	675	29	2175	92	Mill & Resurface	\$50,025	\$7,504	\$57,529	13
East Dogwood Court	CR 638	Cul-De-Sac	1455	30	4850	92	Seal Coat	\$48,500	\$7,275	\$55,775	4
Forest View Drive	CR 626	CR 637	910	30	3034	92	Seal Coat	\$30,340	\$4,551	\$34,891	3
Hill Road	CR 638	Township Line	2130	26	6153	92	Seal Coat	\$61,530	\$9,230	\$70,760	4
Lancaster Court	Lancaster Drive	Cul-De-Sac	595	29	2345	92	Mill & Resurface	\$53,935	\$8,090	\$62,025	13
Meadowbrooke Drive	CR 635	Sharpless Boulevard	1010	34	3816	92	Seal Coat	\$38,160	\$5,724	\$43,884	2
Shenwood Court	Shenwood Lane	Cul-De-Sac	215	30	985	92	Seal Coat	\$9,850	\$1,478	\$11,328	10
Third Street (2)	Olive Street	Bridge Street	530	19	1119	92	Seal Coat	\$11,190	\$1,679	\$12,869	4
Valley Farm Road	CR 635	Main Street	1920	24	6400	92	Seal Coat	\$64,000	\$9,600	\$73,600	4
Wildberry Drive	Sharpless Boulevard	Fieldcrest Drive	635	34	2399	92	Seal Coat	\$23,990	\$3,599	\$27,589	2
Doral Drive	Cypress Point Road	Cypress Point Road	570	31	1964	94	Seal Coat	\$19,640	\$2,946	\$22,586	5
Dunes Court	W Country Club Drive	Cul-De-Sac	490	30	1985	94	Mill & Resurface	\$45,655	\$6,848	\$52,503	5
East Park Drive (2)	Sanitary Pump Station	Cul-De-Sac	2270	30	8770	94	Seal Coat	\$87,700	\$13,155	\$100,855	8
Fenwick Court	Shenwood Lane	Cul-De-Sac	175	30	880	94	Mill & Resurface	\$20,240	\$3,036	\$23,276	10
Green Street	Main Street	Dead End	645	18	1290	94	Seal Coat	\$12,900	\$1,935	\$14,835	4
Ikea Drive (2)	Cul-De-Sac	Stemmers Lane	3400	30	11333	94	Seal Coat	\$113,330	\$17,000	\$130,330	8
Lancaster Drive	Heath Drive	CR 626	1345	29	4334	94	Seal Coat	\$43,340	\$6,501	\$49,841	3
Lundys Alley	Green Street	Dead End	155	13	225	94	Seal Coat	\$2,250	\$338	\$2,588	8
Main Street (2)	ABCO Federal Credit Union	Bridge Street	650	23	1660	94	Seal Coat	\$16,600	\$2,490	\$19,090	4
Mayfaire Circle	Fernbrooke Drive	Fernbrooke Drive	1906	30	6353	94	Seal Coat	\$63,530	\$9,530	\$73,060	3
Muirfield Court	Greenbrier Drive	Cul-De-Sac	250	31	1220	94	Mill & Resurface	\$28,060	\$4,209	\$32,269	5
Murray Avenue	Blue Jay Hill Road	Dead End	335	21	782	94	Seal Coat	\$7,820	\$1,173	\$8,993	9
Oak Tree Court	Maple Tree Drive	Cul-De-Sac	1835	30	6117	94	Seal Coat	\$61,170	\$9,176	\$70,346	3
Pebble Beach Drive	W Country Club Drive	Greenbrier Drive	395	31	1361	94	Seal Coat	\$13,610	\$2,042	\$15,652	5
Pinehurst Court	Greenbrier Drive	Cul-De-Sac	310	31	1395	94	Mill & Resurface	\$32,085	\$4,813	\$36,898	5
Saint Andrew's Court	E Country Club Drive	E Country Club Drive	820	31	2825	94	Seal Coat	\$28,250	\$4,238	\$32,488	6
Sawgrass Drive	W Country Club Drive	W Country Club Drive	1800	31	6200	94	Seal Coat	\$62,000	\$9,300	\$71,300	5
Seeley Drive	Orchard Lane	Holly Lane	765	29	2465	94	Seal Coat	\$24,650	\$3,698	\$28,348	3
Westwind Way	Sharpless Boulevard	Sharpless Boulevard	945	34	3570	94	Seal Coat	\$35,700	\$5,355	\$41,055	2

STREET NAME	FROM	TO	LENGTH	WIDTH	SQUARE YARDS	ROADWAY CONDITION RATING IN 2016	TREATMENT	ESTIMATED CONSTRUCTION COST IN 2016	ESTIMATEED ENGINEERING & INSPECTION COST	ESTIMATED PROJECT TOTAL	YEAR OF REPAIR
Fairfield Drive	Fembrooke Drive	Mayfaire Circle	555	30	1850	96	Seal Coat	\$18,500	\$2,775	\$21,275	2
Laurel Tree Court	Pine Tree Drive	Cul-De-Sac	225	30	1625	96	Mill & Resurface	\$37,375	\$5,606	\$42,981	11
Laurel Tree Drive	Forest View Drive	Pinetree Drive	1050	30	1875	96	Seal Coat	\$18,750	\$2,813	\$21,563	3
Stemmers Lane	CR 630	Terminus	4500	30	15000	96	Seal Coat	\$150,000	\$22,500	\$172,500	8
Beaumont Place	Yorkshire Lane	Dead End	880	30	2950	98	Seal Coat	\$29,500	\$4,425	\$33,925	6
David Street	Lambert Drive	Holly Lane	730	34	2758	98	Mill & Resurface	\$63,434	\$9,515	\$72,949	14
Fembrooke Drive	Hanock Lane	Cul-De-Sac	1710	30	5700	98	Seal Coat	\$57,000	\$8,550	\$65,550	4
Holly Lane	Bloomfield Drive	CR 626	2275	40	9860	98	Seal Coat	\$98,600	\$14,790	\$113,390	15
Kingswood Court	Kings Road	Cul-De-Sac	585	30	1950	98	Mill & Resurface	\$44,850	\$6,728	\$51,578	9
Pinetree Drive	Laurel Tree Drive	Oak Tree Court	905	30	3017	98	Seal Coat	\$30,170	\$4,526	\$34,696	3
Welsford Way	Yorkshire Lane	CR 628	1835	30	6117	98	Seal Coat	\$61,170	\$9,176	\$70,346	6
Yorkshire Lane	CR 628	Welsford Way	700	30	2333	98	Seal Coat	\$23,330	\$3,500	\$26,830	6



D ROADWAY SEGMENTS LISTED BY YEAR OF RECOMMENDED MAINTENANCE ACTIVITY

ROADWAY MAINTENANCE PROGRAM, WESTAMPTON TOWNSHIP, NJ

STREET NAME	FROM	TO	LENGTH	WIDTH	SQUARE YARDS	ROADWAY CONDITION RATING IN 2016	TREATMENT	ESTIMATED CONSTRUCTION COST IN 2016	ESTIMATED ENGINEERING & INSPECTION COST	ESTIMATED PROJECT TOTAL	YEAR OF REPAIR
Creek Road	Hillside Road	4 Creek Road	320	14	498	68	Mill & Resurface	\$11,454	\$1,718	\$13,172	1
Mohican Trail	CR 626	Dead End	675	15	1125	68	Reconstruct	\$45,000	\$6,750	\$51,750	1
Church Street	CR 626	Dead End	1135	12	1514	72	Mill & Resurface	\$34,822	\$5,223	\$40,045	1
Rancocas Court	CR 626	Cul-De-Sac	158	24	760	74	Mill & Resurface	\$17,480	\$2,622	\$20,102	1
Wills Avenue	Main Street	Second Street	360	20	800	74	Mill & Resurface	\$18,400	\$2,760	\$21,160	1
Winstead Drive	Cul-De-Sac	Cul-De-Sac	2135	34	8064	74	Mill & Resurface	\$185,472	\$27,821	\$213,293	1
East Stokes Road	Main Street	Township Line	135	26	390	76	Mill & Resurface	\$8,970	\$1,346	\$10,316	1
Forceville Drive	Forest View Drive	Schoolhouse Road	670	28	2085	76	Reconstruct	\$83,400	\$12,510	\$95,910	1
Lambert Drive	CR 626	Bloomfield Drive	2100	34	7934	76	Mill & Resurface	\$182,482	\$27,372	\$209,854	1
Municipal Drive	CR 626	Terminus	300	34	1133	76	Mill & Resurface	\$26,059	\$3,909	\$29,968	1
Second Street (2)	Bridge Street	Willis Street	600	20	1333	76	Mill & Resurface	\$30,659	\$4,599	\$35,258	1
Holly Lane	CR 541	Township Line	445	34	1682	78	Mill & Resurface	\$38,686	\$5,803	\$44,489	1
Olive Street (2)	Second Street	Third Street	430	21	1004	78	Mill & Resurface	\$23,092	\$3,464	\$26,556	1
Hanock Lane	Schoolhouse Drive	New Jersey Turnpike	3105	40	13800	86	Mill & Resurface	\$317,400	\$47,610	\$365,010	2
Fieldcrest Drive	Sharpless Boulevard	Sharpless Boulevard	1170	34	4420	90	Seal Coat	\$44,200	\$6,630	\$50,830	2
Sharpless Boulevard	CR 635	Meadowbrooke Drive	3275	34	12371	90	Seal Coat	\$123,710	\$18,557	\$142,267	2
Bentwood Drive	Sharpless Boulevard	Sharpless Boulevard	2300	34	8700	92	Seal Coat	\$87,000	\$13,050	\$100,050	2
Meadowbrooke Drive	CR 635	Sharpless Boulevard	1010	34	3816	92	Seal Coat	\$38,160	\$5,724	\$43,884	2
Wildberry Drive	Sharpless Boulevard	Fieldcrest Drive	635	34	2399	92	Seal Coat	\$23,990	\$3,599	\$27,589	2
Westwind Way	Sharpless Boulevard	Sharpless Boulevard	945	34	3570	94	Seal Coat	\$35,700	\$5,355	\$41,055	2
Fairfield Drive	Fermbrooke Drive	Mayfaire Circle	555	30	1850	96	Seal Coat	\$18,500	\$2,775	\$21,275	2
Second Street	Green Street	Bridge Street	1075	20	2389	80	Mill & Resurface	\$54,947	\$8,242	\$63,189	3
Main Street	Valley Farm Road	ABCO Federal Credit Union	980	23	2505	82	Mill & Resurface	\$57,615	\$8,642	\$66,257	3
Brighton Road	Tarnsfield Road	Tarnsfield Road	2040	29	6574	88	Seal Coat	\$65,740	\$9,861	\$75,601	3
Churchill Street	Greenwich Drive	Greenwich Drive	670	29	2159	88	Seal Coat	\$21,590	\$3,239	\$24,829	3
Fort Drive	Russo Drive	Holly Lane	1225	34	4628	88	Seal Coat	\$46,280	\$6,942	\$53,222	3
Maple Tree Drive	CR 637	CR 630	1985	31	6338	88	Seal Coat	\$68,380	\$10,257	\$78,637	3
Norwyn Lane	CR 630	Smith Lane	365	34	1379	88	Seal Coat	\$13,790	\$2,069	\$15,859	3
Partree Road	Glascow Road	Dover Road	285	29	919	88	Seal Coat	\$9,190	\$1,379	\$10,569	3
Russo Drive	Bloomfield Drive	Dead End	750	34	2834	88	Seal Coat	\$28,340	\$4,251	\$32,591	3
Heath Drive	Lancaster Drive	Bloomfield Drive	590	29	1902	90	Seal Coat	\$19,020	\$2,853	\$21,873	3
Wickham Lane	Sherwood Lane	Sherwood Lane	735	30	2450	90	Seal Coat	\$24,500	\$3,675	\$28,175	3
Forest View Drive	CR 626	CR 637	910	30	3034	92	Seal Coat	\$30,340	\$4,551	\$34,891	3

STREET NAME	FROM	TO	LENGTH	WIDTH	SQUARE YARDS	ROADWAY CONDITION RATING IN 2016	TREATMENT	ESTIMATED CONSTRUCTION COST IN 2016	ESTIMATEED ENGINEERING & INSPECTION COST	ESTIMATED PROJECT TOTAL	YEAR OF REPAIR
Lancaster Drive	Heath Drive	CR 626	1345	29	4334	94	Seal Coat	\$43,340	\$6,501	\$49,841	3
Mayfaire Circle	Fernbrooke Drive	Fernbrooke Drive	1906	30	6353	94	Seal Coat	\$63,530	\$9,530	\$73,060	3
Oak Tree Court	Maple Tree Drive	Cul-De-Sac	1835	30	6117	94	Seal Coat	\$61,170	\$9,176	\$70,346	3
Seeley Drive	Orchard Lane	Holly Lane	765	29	2465	94	Seal Coat	\$24,650	\$3,698	\$28,348	3
Laurel Tree Drive	Forest View Drive	Pinetree Drive	1050	30	1875	96	Seal Coat	\$18,750	\$2,813	\$21,563	3
Pinetree Drive	Laurel Tree Drive	Oak Tree Court	905	30	3017	98	Seal Coat	\$30,170	\$4,526	\$34,696	3
Tulip Tree Drive	Dogwood Drive	Cul-De-Sac	730	30	2434	78	Mill & Resurface	\$55,982	\$8,397	\$64,379	4
David Street	Pennington Drive	Holly Lane	285	31	982	84	Seal Coat	\$9,820	\$1,473	\$11,293	4
Dover Road	Tarnsfield Road	Berkshire Road	3030	29	9764	84	Seal Coat	\$97,640	\$14,646	\$112,286	4
Quail Hollow Road	Greenwich Drive	Tarnsfield Road	2510	29	8088	86	Seal Coat	\$80,880	\$12,132	\$93,012	4
Bridge Street	CR 626	Main Street	850	27	2550	90	Seal Coat	\$25,500	\$3,825	\$29,325	4
Dogwood Drive	CR 638	Township Line	1185	28	3686	90	Seal Coat	\$36,860	\$5,529	\$42,389	4
Manor Drive	East Dogwood Court	CR 639	1600	30	5333	90	Seal Coat	\$53,330	\$8,000	\$61,330	4
Olive Street	Main Street	Second Street	420	21	980	90	Seal Coat	\$9,800	\$1,470	\$11,270	4
Western Drive	CR 541	Terminus	1340	40	5955	90	Seal Coat	\$59,550	\$8,933	\$68,483	4
Dale Road	CR 639	CR 638	675	18	1350	92	Seal Coat	\$13,500	\$2,025	\$15,525	4
East Dogwood Court	CR 638	Cul-De-Sac	1455	30	4850	92	Seal Coat	\$48,500	\$7,275	\$55,775	4
Hill Road	CR 638	Township Line	2130	26	6153	92	Seal Coat	\$61,530	\$9,230	\$70,760	4
Third Street (2)	Olive Street	Bridge Street	530	19	1119	92	Seal Coat	\$11,190	\$1,679	\$12,869	4
Valley Farm Road	CR 635	Main Street	1920	24	6400	92	Seal Coat	\$64,000	\$9,600	\$73,600	4
Green Street	Main Street	Dead End	645	18	1290	94	Seal Coat	\$12,900	\$1,935	\$14,835	4
Main Street (2)	ABCO Federal Credit Union	Bridge Street	650	23	1660	94	Seal Coat	\$16,600	\$2,490	\$19,090	4
Fernbrooke Drive	Hanock Lane	Cul-De-Sac	1710	30	5700	98	Seal Coat	\$57,000	\$8,550	\$65,550	4
Augusta Drive	W Country Club Drive	W Country Club Drive	1300	31	4477	88	Mill & Resurface	\$102,971	\$15,446	\$118,417	5
Bally Bunion Court	Augusta Drive	Cul-De-Sac	220	31	1110	90	Mill & Resurface	\$25,530	\$3,830	\$29,360	5
Bay Hill Court	Augusta Drive	Cul-De-Sac	305	31	1386	90	Mill & Resurface	\$31,878	\$4,782	\$36,660	5
Greenbrier Drive	W Country Club Drive	W Country Club Drive	1755	31	6485	90	Seal Coat	\$64,850	\$9,728	\$74,578	5
West Country Club Drive	Deerwood Drive	Cul-De-Sac	5555	32	20325	90	Seal Coat	\$203,250	\$30,488	\$233,738	5
Birkdale Court	Augusta Drive	Cul-De-Sac	264	31	1220	92	Mill & Resurface	\$28,060	\$4,209	\$32,269	5
Cypress Point Road	W Country Club Drive	W Country Club Drive	1580	31	5443	92	Seal Coat	\$54,430	\$8,165	\$62,595	5
Doral Drive	Cypress Point Road	Cypress Point Road	570	31	1964	94	Seal Coat	\$19,640	\$2,946	\$22,586	5
Dunes Court	W Country Club Drive	Cul-De-Sac	490	30	1985	94	Mill & Resurface	\$45,655	\$6,848	\$52,503	5

STREET NAME	FROM	TO	LENGTH	WIDTH	SQUARE YARDS	ROADWAY CONDITION RATING IN 2016	TREATMENT	ESTIMATED CONSTRUCTION COST IN 2016	ESTIMATEED ENGINEERING & INSPECTION COST	ESTIMATED PROJECT TOTAL	YEAR OF REPAIR
Muirfield Court	Greenbrier Drive	Cul-De-Sac	250	31	1220	94	Mill & Resurface	\$28,060	\$4,209	\$32,269	5
Pebble Beach Drive	W Country Club Drive	Greenbrier Drive	395	31	1361	94	Seal Coat	\$13,610	\$2,042	\$15,652	5
Pinehurst Court	Greenbrier Drive	Cul-De-Sac	310	31	1395	94	Mill & Resurface	\$32,085	\$4,813	\$36,898	5
Sawgrass Drive	W Country Club Drive	W Country Club Drive	1800	31	6200	94	Seal Coat	\$62,000	\$9,300	\$71,300	5
Roberts Drive	CR 638	Treetop Lane	3740	30	12470	80	Mill & Resurface	\$286,810	\$43,022	\$329,832	6
Treetop Lane	Roberts Drive	CR 638	1220	30	4067	82	Mill & Resurface	\$93,541	\$14,031	\$107,572	6
East Country Club Drive	Deerwood Drive	Cul-De-Sac	3275	32	11645	90	Seal Coat	\$116,450	\$17,468	\$133,918	6
Spyglass Court	E Country Club Drive	Cul-De-Sac	730	33	2677	90	Seal Coat	\$26,770	\$4,016	\$30,786	6
Deerwood Drive	E Country Club Drive	CR 630	500	50	2778	92	Seal Coat	\$27,780	\$4,167	\$31,947	6
Saint Andrew's Court	E Country Club Drive	E Country Club Drive	820	31	2825	94	Seal Coat	\$28,250	\$4,238	\$32,488	6
Beaumont Place	Yorkshire Lane	Dead End	880	30	2950	98	Seal Coat	\$29,500	\$4,425	\$33,925	6
Welsford Way	Yorkshire Lane	CR 628	1835	30	6117	98	Seal Coat	\$61,170	\$9,176	\$70,346	6
Yorkshire Lane	CR 628	Welsford Way	700	30	2333	98	Seal Coat	\$23,330	\$3,500	\$26,830	6
North Hill Drive	Rolling Hills Drive	Rolling Hills Drive	2355	34	8896	76	Mill & Resurface	\$204,608	\$30,691	\$235,299	7
South Hill Drive	Rolling Hills Drive	Rolling Hills Drive	1140	34	4306	80	Mill & Resurface	\$99,038	\$14,856	\$113,894	7
Amara Lane	CR 635	Amara Lane	2745	30	9150	84	Mill & Resurface	\$210,450	\$31,568	\$242,018	7
Country Lane	Rolling Hills Drive	North Hills Drive	675	34	2550	84	Mill & Resurface	\$58,650	\$8,798	\$67,448	7
Rolling Hills Drive	South Hill Drive	CR 635	995	40	4423	84	Mill & Resurface	\$101,729	\$15,259	\$116,988	7
Oakcrest Lane	North Hill Drive	Country Lane	530	34	2002	86	Mill & Resurface	\$46,046	\$6,907	\$52,953	7
Third Street	Cul-De-Sac	Olive Street	350	19	739	78	Mill & Resurface	\$16,997	\$2,550	\$19,547	8
Bridge Street (1)	Main Street	Terminus	485	18	970	84	Mill & Resurface	\$22,310	\$3,347	\$25,657	8
Rolling Hills Drive East	CR 635	Winstead Drive	320	40	1422	84	Mill & Resurface	\$32,706	\$4,906	\$37,612	8
Main Street (3)	Bridge Street	Township Limits	1500	24	4000	86	Mill & Resurface	\$92,000	\$13,800	\$105,800	8
Ikea Drive	CR 635	Cul-De-Sac	60	40	2934	88	Mill & Resurface	\$67,482	\$10,122	\$77,604	8
Price Drive	Lambert Drive	Holly Lane	685	34	2588	90	Seal Coat	\$25,880	\$3,882	\$29,762	8
Stratton Drive	Pennington Drive	Cul-De-Sac	1085	34	2895	90	Seal coat	\$28,950	\$4,343	\$33,293	8
West Maple Tree Drive	CR 637	CR 637	1840	30	6135	90	Seal Coat	\$61,350	\$9,203	\$70,553	8
East Park Drive (2)	Sanitary Pump Station	Cul-De-Sac	2270	30	8770	94	Seal Coat	\$87,700	\$13,155	\$100,855	8
Ikea Drive (2)	Cul-De-Sac	Stemmers Lane	3400	30	11333	94	Seal Coat	\$113,330	\$17,000	\$130,330	8
Lundys Alley	Green Street	Dead End	155	13	225	94	Seal Coat	\$2,250	\$338	\$2,588	8
Stemmers Lane	CR 630	Terminus	4500	30	15000	96	Seal Coat	\$150,000	\$22,500	\$172,500	8
Blue Jay Hill Road	CR 626	Hillside Road	1475	15	2459	82	Mill & Resurface	\$56,557	\$8,484	\$65,041	9
Gilbert Road	CR 639	Township Line	645	20	1434	84	Mill & Resurface	\$32,982	\$4,947	\$37,929	9
Hillside Road	Blue Jay Hill Road	Terminus	705	16	1254	84	Mill & Resurface	\$28,842	\$4,326	\$33,168	9

STREET NAME	FROM	TO	LENGTH	WIDTH	SQUARE YARDS	ROADWAY CONDITION RATING IN 2016	TREATMENT	ESTIMATED CONSTRUCTION COST IN 2016	ESTIMATEED ENGINEERING & INSPECTION COST	ESTIMATED PROJECT TOTAL	YEAR OF REPAIR
Creek Road	4 Creek Road	Dead End	705	14	1097	86	Mill & Resurface	\$25,231	\$3,785	\$29,016	9
Kings Road	CR 630	CR 639	9165	21	21383	88	Mill & Resurface	\$491,809	\$73,771	\$565,580	9
East Park Drive	CR 628	Sanitary Pump Station	1150	30	3833	90	Seal Coat	\$38,330	\$5,750	\$44,080	9
Murray Avenue	Blue Jay Hill Road	Dead End	335	21	782	94	Seal Coat	\$7,820	\$1,173	\$8,993	9
Kingswood Court	Kings Road	Cul-De-Sac	585	30	1950	98	Mill & Resurface	\$44,850	\$6,728	\$51,578	9
Sherwood Lane	Tallowood Drive	Tallowood Drive	5300	30	18255	80	Mill & Resurface	\$419,865	\$62,980	\$482,845	10
Hyde Lane	Sherwood Lane	Sherwood Lane	595	30	1984	86	Mill & Resurface	\$45,632	\$6,845	\$52,477	10
Lawrence Lane	Tallowood Drive	Sherwood Lane	1500	30	5635	86	Mill & Resurface	\$129,605	\$19,441	\$149,046	10
Thames Lane	Sherwood Lane	Sherwood Lane	1345	30	4484	90	Seal Coat	\$44,840	\$6,726	\$51,566	10
Wickham Court	Wickham Lane	Cul-De-Sac	208	30	995	90	Mill & Resurface	\$22,885	\$3,433	\$26,318	10
Sherwood Court	Sherwood Lane	Cul-De-Sac	215	30	985	92	Seal Coat	\$9,850	\$1,478	\$11,328	10
Fenwick Court	Sherwood Lane	Cul-De-Sac	175	30	880	94	Mill & Resurface	\$20,240	\$3,036	\$23,276	10
Greenwich Drive	Quail Hollow Drive	Greenwich Drive	3310	31	11402	80	Mill & Resurface	\$262,246	\$39,337	\$301,583	11
Baldwin Lane	CR 626	Kanabe Drive	465	30	1550	82	Mill & Resurface	\$35,650	\$5,348	\$40,998	11
Holly Tree Court	CR 637	Cul-De-Sac	435	35	2050	82	Mill & Resurface	\$47,150	\$7,073	\$54,223	11
Beacon Street	Greenwich Drive	Greenwich Drive	955	34	3608	84	Mill & Resurface	\$82,984	\$12,448	\$95,432	11
Kanabe Drive	Baldwin Lane	Baldwin Lane	1260	30	4200	86	Mill & Resurface	\$96,600	\$14,490	\$111,090	11
Greenwich Drive	CR 630	Quail Hollow Road	695	40	3089	88	Seal Coat	\$30,890	\$4,634	\$35,524	11
Schoolhouse Road	CR 626	Sherwood Lane	820	30	2734	88	Mill & Resurface	\$62,882	\$9,432	\$72,314	11
Steinway Court	Kanabe Drive	Cul-De-Sac	445	30	1483	88	Mill & Resurface	\$34,109	\$5,116	\$39,225	11
Laurel Tree Court	Pine Tree Drive	Cul-De-Sac	225	30	1625	96	Mill & Resurface	\$37,375	\$5,606	\$42,981	11
Glasgow Road	Dover Road	Berkshire Road	1180	29	3803	80	Mill & Resurface	\$87,469	\$13,120	\$100,589	12
Berkshire Road	Tarnsfield Road	Orchard Lane	1070	29	3448	82	Mill & Resurface	\$79,304	\$11,896	\$91,200	12
Tarnsfield Road	Greenwich Drive	CR 630	2920	40	12978	84	Mill & Resurface	\$298,494	\$44,774	\$343,268	12
Tenby Court	Quail Hollow Drive	Cul-De-Sac	360	29	1160	84	Mill & Resurface	\$26,680	\$4,002	\$30,682	12
Berkshire Court	Berkshire Road	Cul-De-Sac	225	29	975	86	Mill & Resurface	\$22,425	\$3,364	\$25,789	12
Brighton Court	Brighton Road	Cul-De-Sac	200	29	915	86	Mill & Resurface	\$21,045	\$3,157	\$24,202	12
Chase Court	Quail Hollow Drive	Cul-De-Sac	256	29	1205	86	Mill & Resurface	\$27,715	\$4,157	\$31,872	12
Dover Court	Dover Road	Cul-De-Sac	242	29	1175	88	Mill & Resurface	\$27,025	\$4,054	\$31,079	12
Highgate Court	Quail Hollow Drive	Cul-De-Sac	290	29	1170	88	Mill & Resurface	\$26,910	\$4,037	\$30,947	12
Whitlow Drive	Tarnsfield Road	Bloomfield Drive	870	30	2900	88	Mill & Resurface	\$66,700	\$10,005	\$76,705	12
Pennington Drive	Bloomfield Drive	Seely Drive	1655	34	6253	80	Mill & Resurface	\$143,819	\$21,573	\$165,392	13
Tallowood Drive	CR626	Greenwich Drive	1545	40	6867	80	Mill & Resurface	\$157,941	\$23,691	\$181,632	13
Fort Place	Fort Drive	Cul-De-Sac	195	34	1055	84	Mill & Resurface	\$24,265	\$3,640	\$27,905	13
Devonshire Drive	Tarnsfield Road	Lancaster Drive	1930	29	6219	86	Mill & Resurface	\$143,037	\$21,456	\$164,493	13
Lancaster Drive	Heath Drive	Devonshire Drive	565	29	1821	86	Mill & Resurface	\$41,883	\$6,282	\$48,165	13
Patterson Drive	Pennington Drive	Holly Lane	485	34	1835	86	Mill & Resurface	\$42,205	\$6,331	\$48,536	13

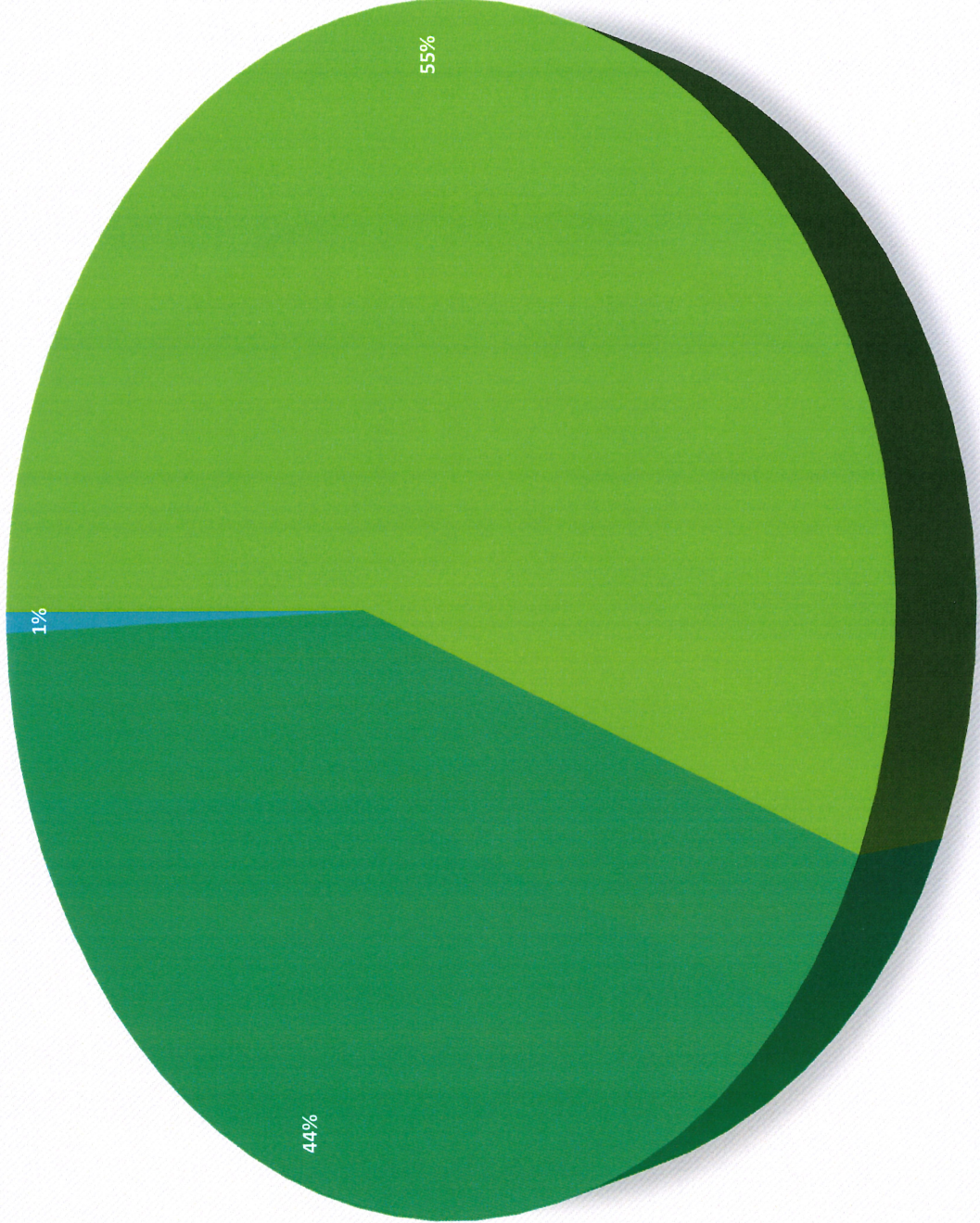
STREET NAME	FROM	TO	LENGTH	WIDTH	SQUARE YARDS	ROADWAY CONDITION RATING IN 2016	TREATMENT	ESTIMATED CONSTRUCTION COST IN 2016	ESTIMATEED ENGINEERING & INSPECTION COST	ESTIMATED PROJECT TOTAL	YEAR OF REPAIR
Dublin Drive	Devonshire Drive	Heath Drive	675	29	2175	92	Mill & Resurface	\$50,025	\$7,504	\$57,529	13
Lancaster Court	Lancaster Drive	Cul-De-Sac	595	29	2345	92	Mill & Resurface	\$53,935	\$8,090	\$62,025	13
Howell Drive	Lambert Drive	Dead End	825	34	4725	80	Mill & Resurface	\$108,675	\$16,301	\$124,976	14
Bloomfield Drive	Pennington Drive	Devonshire Drive	2340	34	8840	82	Mill & Resurface	\$203,320	\$30,498	\$233,818	14
Pennington Drive	Howell Drive	Seeley Drive	2635	34	9955	82	Mill & Resurface	\$228,965	\$34,345	\$263,310	14
Ogden Drive	Lambert Drive	Holly Lane	780	34	2947	86	Mill & Resurface	\$67,781	\$10,167	\$77,948	14
David Street	Lambert Drive	Holly Lane	730	34	2758	98	Mill & Resurface	\$63,434	\$9,515	\$72,949	14
Smith Lane	CR 541	Township Line	800	34	2023	80	Mill & Resurface	\$46,529	\$6,979	\$53,508	15
Orchard Lane	CR 630	Dover Road	1600	29	5156	82	Mill & Resurface	\$118,588	\$17,788	\$136,376	15
Seeley Drive	Pennington Drive	Holly Lane	860	34	3249	84	Mill & Resurface	\$74,727	\$11,209	\$85,936	15
Holly Lane	Bloomfield Drive	CR 541	2120	40	9190	88	Mill & Resurface	\$211,370	\$31,706	\$243,076	15
Stratton Drive	Seeley Drive	Cul-de-sac	200	34	1500	90	Mill & Resurface	\$34,500	\$5,175	\$39,675	15
Holly Lane	Bloomfield Drive	CR 626	2275	40	9860	98	Seal Coat	\$98,600	\$14,790	\$113,390	15



PIE GRAPH VISUALLY SHOWING ROADWAY TREATMENTS

ROADWAY MAINTENANCE PROGRAM, WESTAMPTON TOWNSHIP, NJ

Roadway Treatments



■ MILL & RESURFACE ■ SEAL COAT ■ RECONSTRUCT